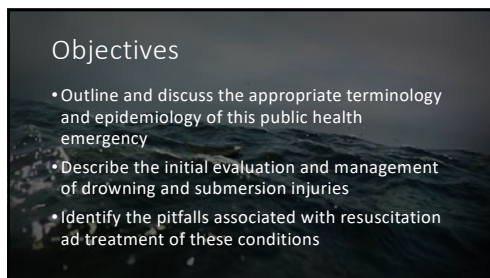


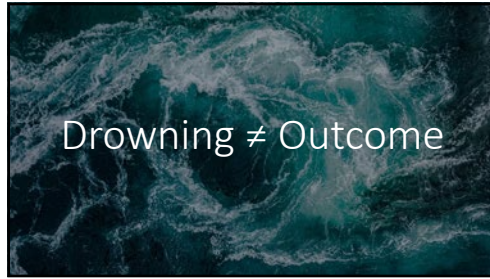
1



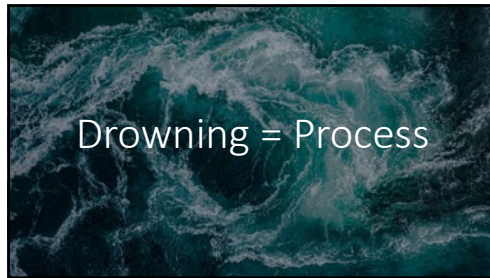
2



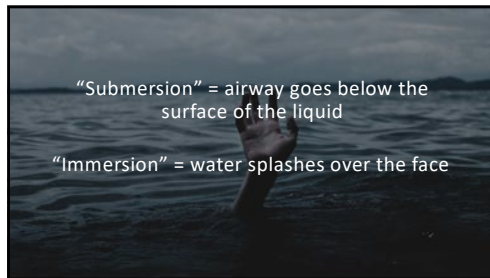
3



4



5



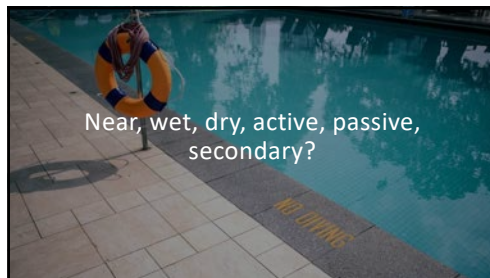
6



7



8



9



10



11



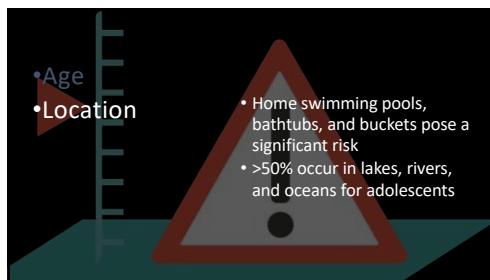
12



13



14



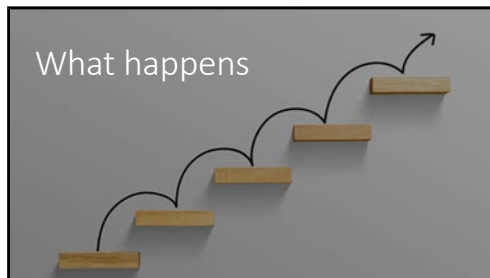
15



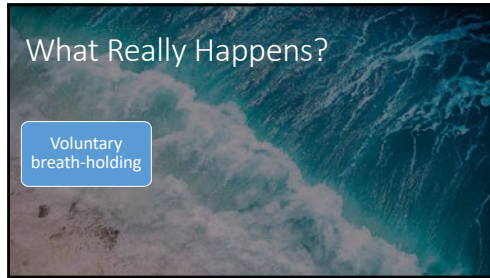
16



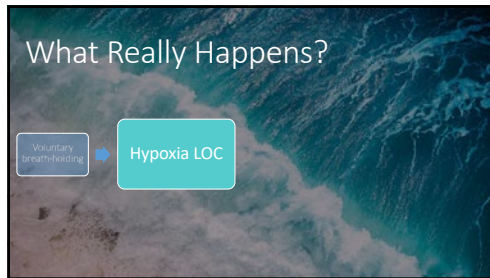
17



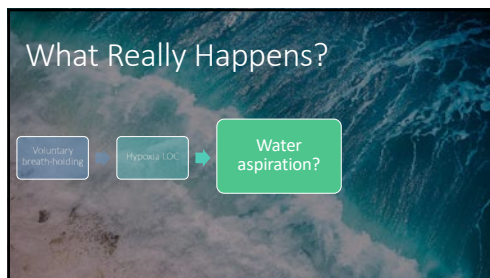
18



19



20



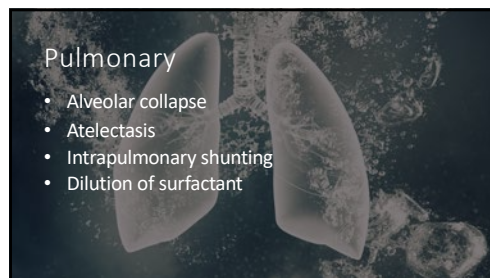
21



22



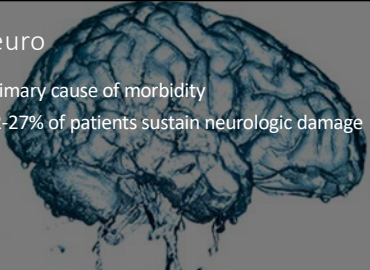
23



24

Neuro

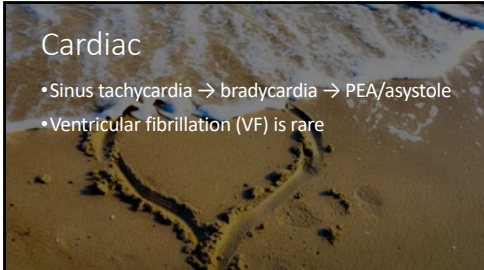
- Primary cause of morbidity
- 12-27% of patients sustain neurologic damage



25

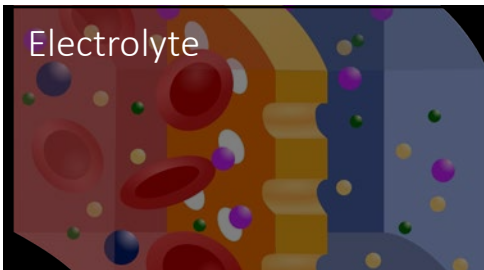
Cardiac

- Sinus tachycardia → bradycardia → PEA/asystole
- Ventricular fibrillation (VF) is rare



26

Electrolyte



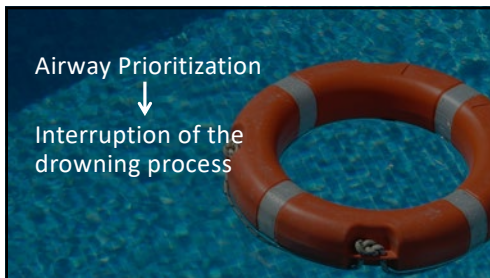
27



28



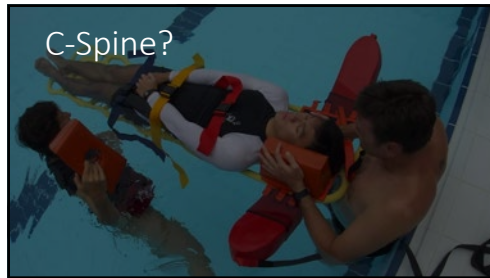
29



30



31



32



33



34

Important Questions

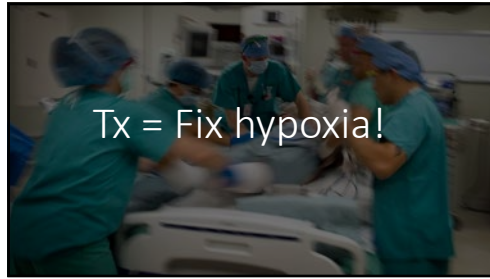
- Description of scene
- Time submerged
- Potential known contaminants
- Water temperature
- Type of rescue
- Precipitating events

35

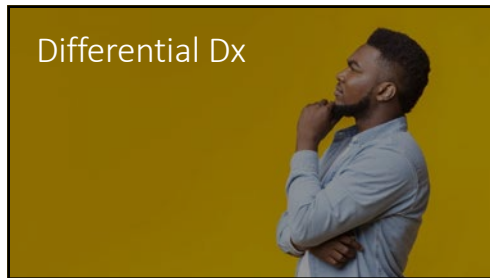
Physical Exam

- Dyspnea
- Cough
- Rales, rhonchi, and wheezing
- Vital signs are vital
 - Pulse oximetry, accurate temperature

36



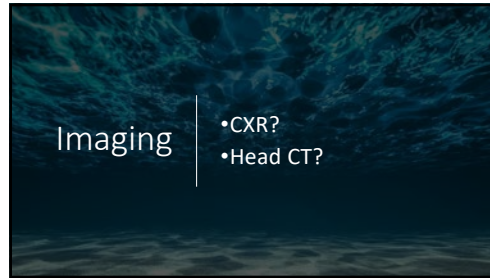
37



38



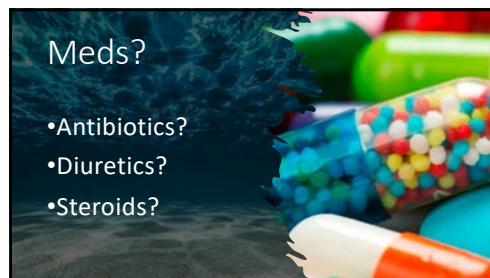
39



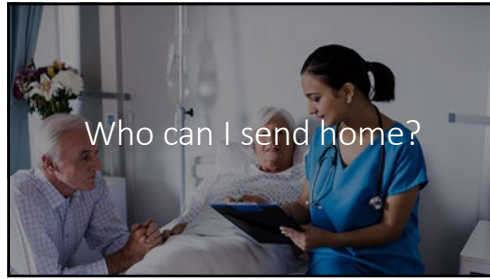
40



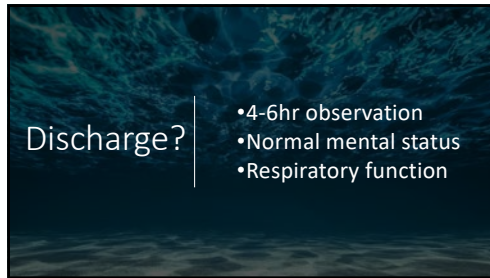
41



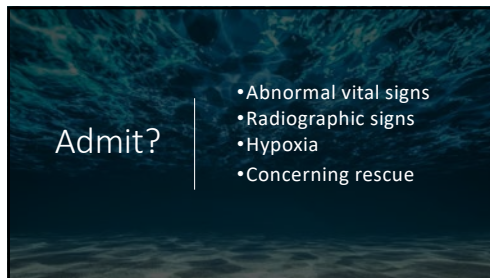
42



43



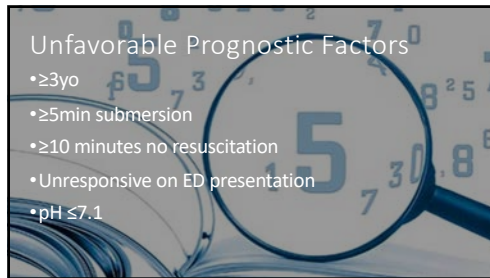
44



45



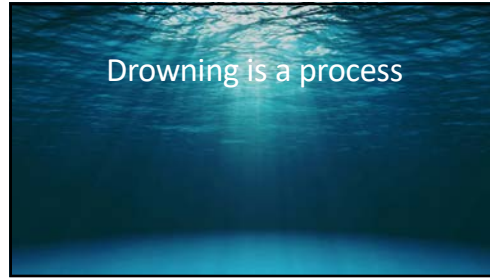
46



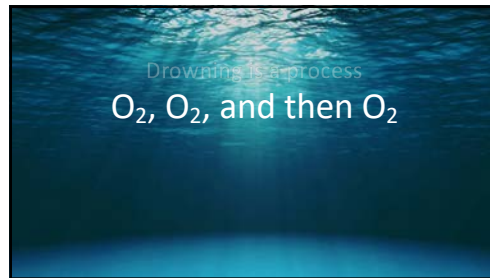
47



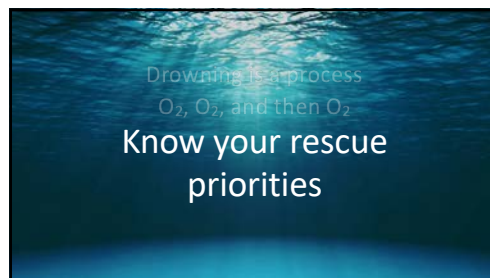
48



49



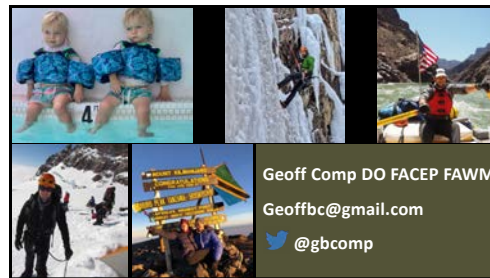
50



51



52



53
